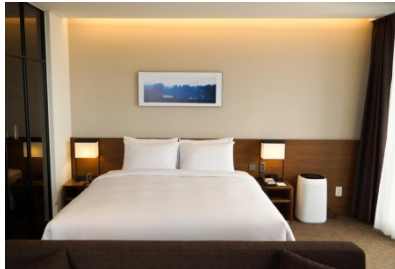




早鳥優惠 於指定日子出機票及出發勁減高達 **HK\$1410** [詳情請參閱機票附加費表]

- ✓ 來回國泰/國泰港龍航空經濟客位機票 Round trip economy class air ticket on CX/KA
- ✓ 2晚酒店住宿 2 nights hotel accommodation



Ramada Encore Haeundae

www.ramadaencorehaeundae.com

海雲台區 地鐵2號線海雲台站3號出口步行2分鐘

Superior Room

早餐 HK\$150 (每人/日)

每位 **HK\$3,850+**
(成人佔半房)



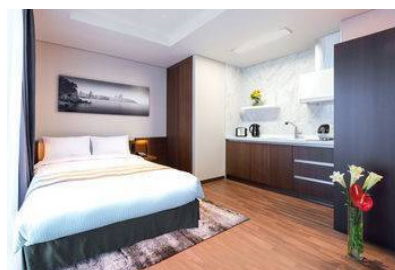
Solaria Nishitetsu

www.citadines.com/zh/korea-south/busan/citadines-haeundae-busan/index.html

釜山鎮區 地鐵1/2號線西面站7號出口步行8分鐘

Standard Room

每位 **HK\$3,950+**
(成人佔半房)



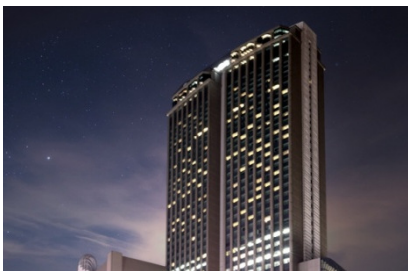
Citadines Haeundae

www.citadines.com/zh/korea-south/busan/citadines-haeundae-busan/index.html

海雲台區 地鐵2號線海雲台站步行1分鐘

Studio Room

每位 **HK\$4,100+**
(成人佔半房)



Lotte

www.lottehotel.com/busan/en/Default.asp

釜山鎮區 地鐵1/2號線西面站步行5分鐘

Deluxe Room

每位 **HK\$4,630+**
(成人佔半房)

※ 套票以淡季價格計算，於旺季、週末、假期前夕或大型節日期間出發，需另付附加費，詳情向本社職員查詢作準。



國泰/國泰港龍 釜山機票附加費表
CX/KA Busan Airfare Surcharge
出發日期: 2019年5月20日- 9月30日
Travel Period : 20May – 30Sep2019

2 人成行 GV2 (min. 2 adults)					
Departure	Adult	Child	Booking Class	Ticket Validity	
Early Bird Promotion					
20May-05Jun, 08-27Jun, 30Jun-11Jul, 23Aug-26Sep, 29-30Sep	LESS	\$1410	1060	Q	2-7 Days
Ticket must be issued on or before 30Jun					
20May-30Sep	---	---	S	2-7 Days	

Price Includes :

- Round trip economy class air ticket on CX or KA
- 2 nights hotel accommodation
- HK\$100,000 Travel Insurance [Zurich Insurance (Hong Kong) 24-hour emergency hotline+852-2886-3977]
- 0.15% TIC Levy

Child travel with min. 2 adults price:

- Twin Sharing/Extra bed adult price less: \$760

Terms & Conditions :

- Package price is per person (in HK\$) and valid between **20May-30Sep19**; and hotel stay must be completed by 30Sep
- Booking class : S (except specified period) Ticket validity : 2-7 days
- Minimum 2 adults travelling together on same outbound & inbound flights, and booking must be reserved under the same record locator (PNR) for all passengers
- "OSI: CX/KA GV2 FARE IN DATE OUT DATE AT HOTEL NAME" must be input in OSI field of PNR
- Twin room is based on 2 single beds or 1 double bed
- Check whether the Security Bureau has issued any [Outbound Travel Alert](#) for your destination before firming up your travel plan to ensure personal safety
- Hotel star ratings are for reference only, please visit hotel's official website for more information
- Airport tax, HK security charge & fuel surcharge (if any) are not included
- Full payment must be made after confirmation with no refund
- Upon confirmation, any amendment is subject to company's discretion
- All prices and conditions are subject to change without prior notice

費用包括 :

- 來回國泰或國泰港龍航空經濟客位機票
- 兩晚酒店住宿
- HK\$100,000旅遊保險[蘇黎世保險(香港) 24小時緊急支援服務+852-2886-3977]
- 0.15%旅遊業賠償基金

小童最少要與兩位成人同行價錢 :

- 佔床或加床收費按成人減收: \$760

條款及細則 :

- 以上套票價錢以每成人計算, 有效日期為**2019年5月20日至9月30日**; 酒店入住必須於**9月30日**或之前完成
- 訂位代號: S (指定日子除外) 機票有效期: 2-7 日
- 來回程均要最少兩位成人同行, 訂位時亦必須最少兩位客人在同一個PNR內
- PNR必須註明住宿酒店名稱及日期如下:
"OSI: CX/KA GV2 FARE IN DATE OUT DATE AT HOTEL NAME"
- 雙人房之房種為2張單人床或1張雙人床
- 為確保自身安全, 旅客在落實行程前, 應留意保安局有沒有對目的地發出**外遊警告**
- 酒店星級只供參考, 詳情請到訪酒店官方網頁查詢
- 費用並未包括兩地機場稅, 香港機場保安稅及燃油附加費(如適用)
- 餘款需於機票及酒店確認後繳付及恕不退還
- 於機票及酒店確認後, 如需更改本公司擁有最終決定權
- 所有費用如有更改, 恕不另行通知